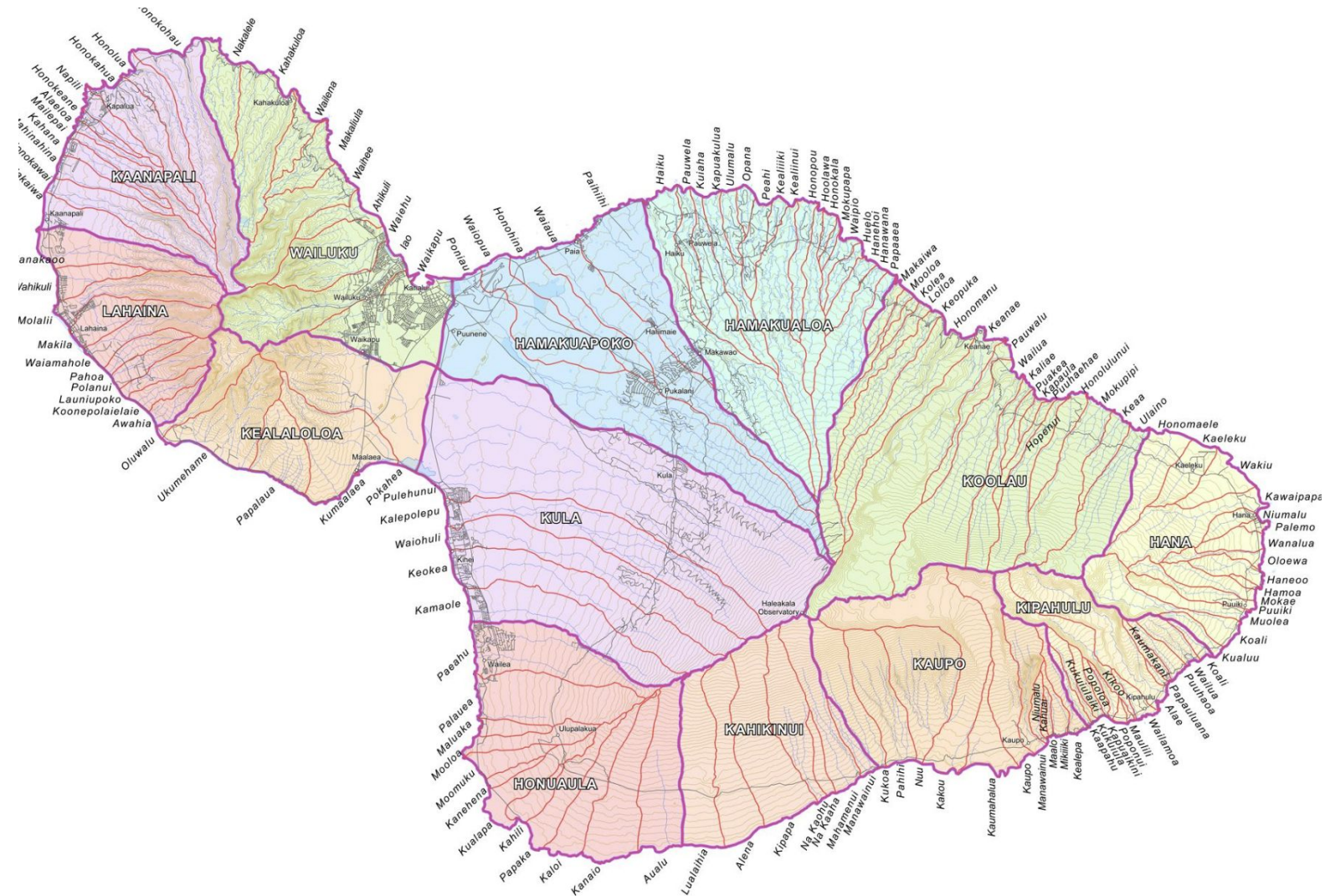
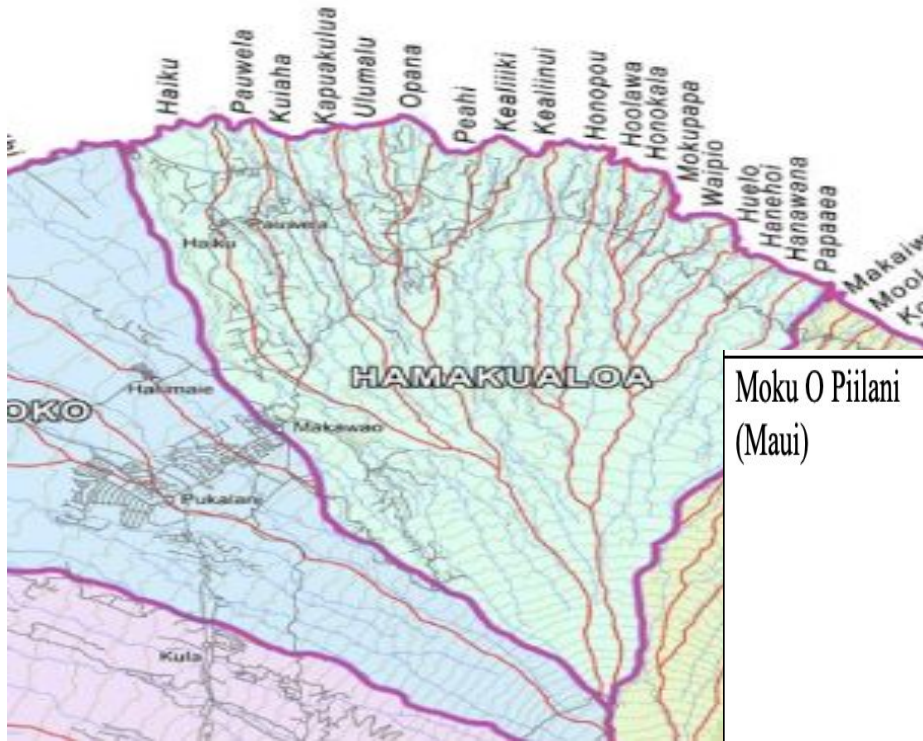


Malama Hamakua Maui  
Keia Mo`okuauhau



Ua Mau ke Ea o ka 'Āina i ka Pono





## Is Hamakualoa.... Haiku?

Moku O Piilani (Maui)	Hamakuapoko	<i>Paihihi, Waiawa, Honohina, Waiopua, and Poniau.</i> (5)
	Hamakualoa	<i>Papaea, Hanawana, Hanehoi, Huelo, Waipio, Mokupapa, Honokaia, Hoolawa, Honopou, Kealiinui, Kealiiki, Peahi, Opana, Ulumalu, Kapuakulua, Kuiaha, Pauwela, and Haiku.</i> (18)
	Koolau	<i>Iliaio, Kaa, Mokunini, Honohulu, Honouliuli</i>

# Legend of Kana and Niheu

Hawaiian culture and mythology mentioned that our moku (land district) of Hāmākualoa is cited in the “Legend of Kana and Niheu” as the birthplace of the kupua (demigod) Kana.

Kana was born in Hāmākualoa, Maui to the goddess Hina in the form of rope and was nurtured into full potential by his grandmother Uli in Hilo (Hawai‘i island) until he assumed a human form. In this new form his body was enormous, and as he grew, the house he lived in had to be lengthened from mountain to sea in order to contain him. His special powers allow him to stretch his body across the islands Hawai‘i, step from one island to another, and wade through interisland channels.

In this legend, Kana rescues his mother Hina from a chief on Moloka‘i who had abducted her. He uses his powers to stretch across the sea and, with the help of his brother Niheu is able to transform the landscape where his mother is imprisoned and rescues her. From this changing landscape, it is said, the turtles in the sea are made. Credit to the Merwin Conservatory



*Photo: Pacific Story Tellers*

# Foreign Settlement



# Homesteading





The area of Hamakualoa was traditionally farmed, and still has several Kuleana Lands still being used today.



The industrial era begins.



HAWAIIAN PINEAPPLE FIELD.



3.126 x 2.343

# A Changing Landscape

1903- Baldwin Brothers formed Haiku Fruit & Packing Company. This launched the pineapple industry on Maui.

1904- Maui's first pineapple cannery began with the construction of a can-making plant and cannery in Haiku. (This is now known as Pauwela Cannery)

\*1,400 cases of pineapple were packed during the initial run. Independent farmers for miles were also able to bring their fruit to be processed.

1948- Operations continued and eventually became Maui Agricultural Company, merging into HC & S.



# A lasting legacy.... Pineapple Fields Forever.....

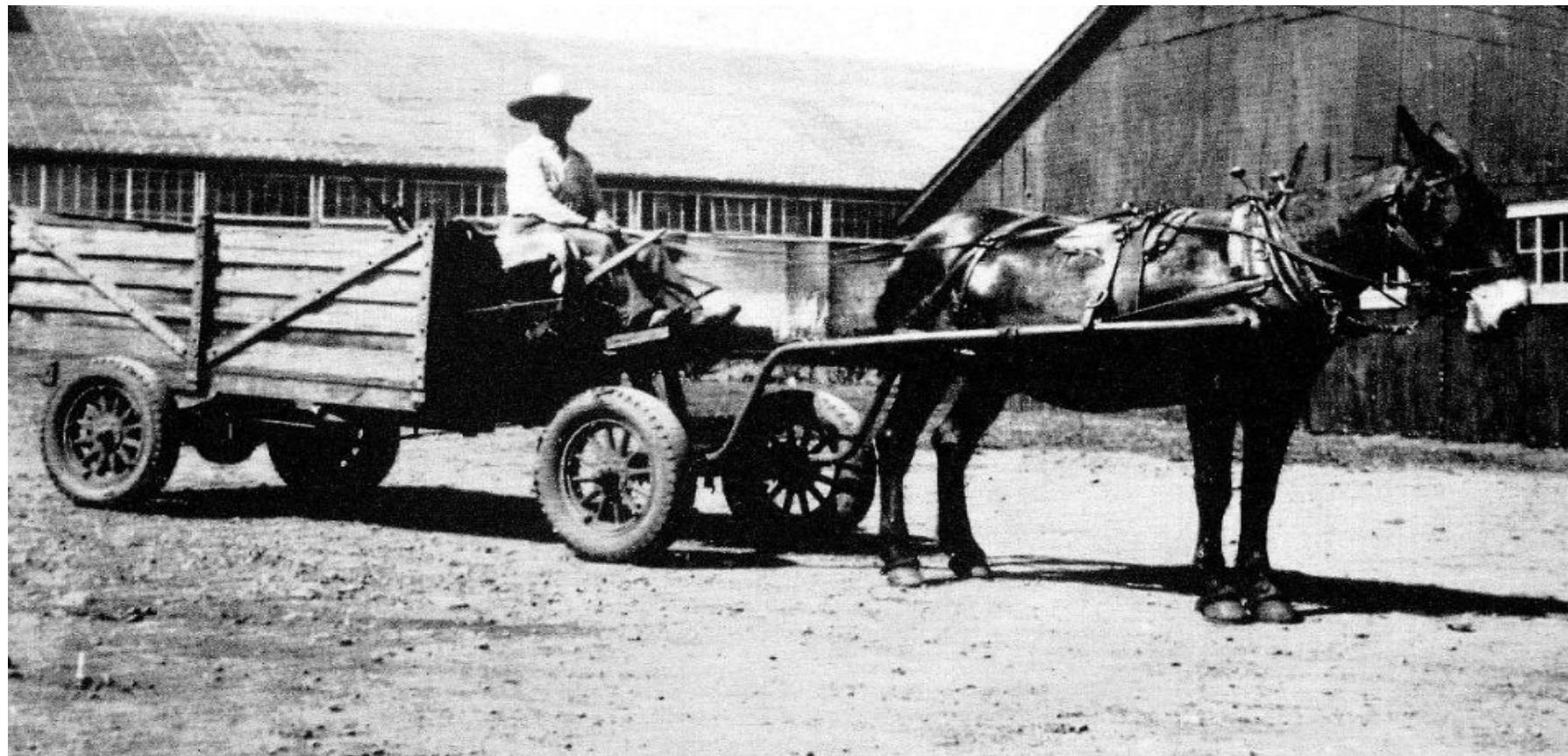
While the Pineapple Industry ends, their  
Remnants of growing practices live on.

Black plastic can be found all over the  
Lands at Hamakualoa today, encouraging  
Us to grow responsibly as we move  
forward.



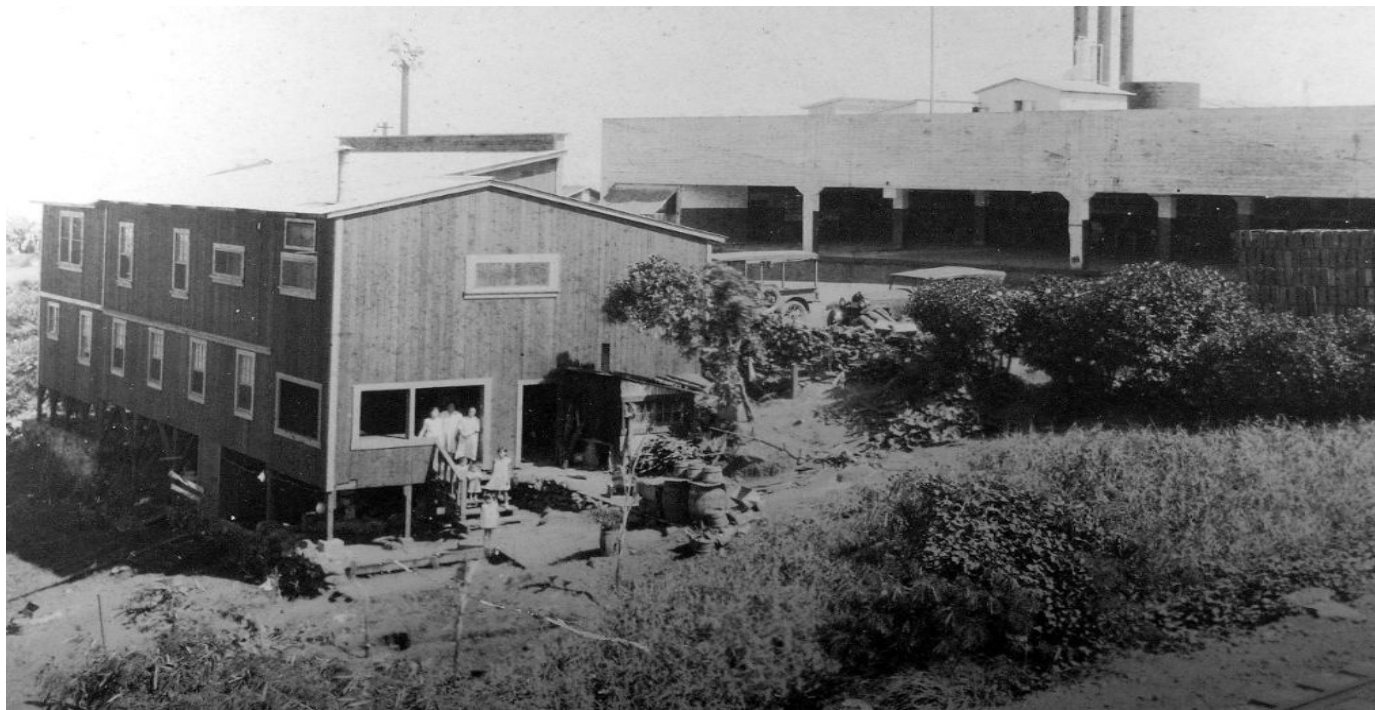
Thank you to the Haiku Living Legacy for the following photos of the Pineapple production. ALL Photos are taken in Haiku, some in the exact area of our workdays.







Anyone eat at Baked on Maui? Look familiar?













Pineapple on Maui stops and the land sits.....

LAND is the new KING

“HE ALI’I KA ‘ĀINA, HE KA UWĀ KE KANAKA” #531

*\*Pukui, M. K., & Varez, D. (1983). 'Ōlelo No'eau:  
Hawaiian Proverbs & poetical sayings.  
Honolulu, Hawai'i: Bishop Museum Press.*



Maui News · 1 min read

**THE COUNTY OF MAUI PURCHASES 267 ACRES @ PEAHI**

- [MAGAZINE](#)
  - [SHOP](#)
  - [CONTACT](#)
  - [MEDIA KIT](#)
- [SUBSCRIBE](#)



Environment: 1 min read

## OPEN SPACE FUNDING TO PRESERVE MAUI'S HAMAKUALOA COASTLINE

For the first time ever, these lands have become available on the open market. Although private property for over 100+ years, it has served and been heavily utilized by the public for an array of recreation, relaxation and subsistence purposes.

This area is rich in native Hawaiian cultural sites and landscapes; is host to endangered species; possesses an expanse of breathtaking scenic beauty of both miles of coastal shoreline and Maui's beloved Mauna Haleakala and Mauna Ka Halawai; offers shoreline access at several points along the coast; and is the backdrop of the world renowned and iconic Peahi surf break aka JAWS.

It was the vision of Maui's own late Congresswoman Patsy Mink to establish a North Shore Heritage Corridor running along Maui's North Shore coastline allowing access for all.

A significant portion of Patsy's vision has been realized in the Hamakuapoko district, and now the time has come to string the blossoms of the Hamakualoa district onto the lei of Maui's North Shore Coastal Heritage Corridor for present and future generations to malama, cherish and enjoy in perpetuity.

Since the inception of Maui County's Open Space Fund in 2002, many significant and special places have been preserved and saved from development. This is so important to Maui County that it is mandated in our governing County Charter with a funding mechanism built in.

With a healthy trust fund balance; No other sensitive land areas currently in imminent threat of development (so to speak); coupled with the Kuiuaha lands still held under one ownership with minimal costly entitlements and infrastructure to inflate an appraised value; and the fact that the Hamakualoa district has never received the benefits of the Open Space Preservation Fund, it is fitting, timely and appropriate that the **theme for the Maui County Fiscal Year 2016 Open Space Fund be Hamakualoa.**



**Proposed Haiku  
North Shore  
Open Space**

Kuiaha-Bay  
Lots  
?

**Lots  
2,3,4,5  
\$10.5 mil**

**Peahi Lot  
\$4.8 mil**

**Lot 2  
\$1.73 acres**

**Lot 3  
\$8.77 acres**

**School**

**Valley Isle  
Memorial J.**

Chocola

Hana Hwy

# THE COMMUNITY COMES TOGETHER

The County of Maui purchased 267.74 acres of former plantation land for \$9.49 million in East Maui, near Pe‘ahi.

The land, also referred to as the Ha‘ikū Sugar East Subdivision, consists of four lots and includes a heiau and the access easement to the “Jaws” lookout.

According to information released by the County today, the council plans to use the lots for a Nature Preserve and for organic farming.

PEAHI, MAUI (HawaiiNewsNow) - Maui County is vowing to keep a chunk of land near the world-famous Jaws surf break free of development, in what's being called a victory for the community.

The \$9.5 million, 267-acre land preservation deal started as a community request, which caught the attention of some county council members.

In all, the county bought four lots, which include a heiau and an access easement to the Jaws lookout.

# The Big Idea that Motivated People to Speak Up

If you've surfed Jaws, or you've watched other people surf Jaws in web clips (99% more likely), then you're probably familiar with the fact that the famed big-wave spot is fronted by acres of beautiful, open land. That land, 267 acres stretching from Pe'ahi to Maliko Gulch, is privately owned. And it's for sale.

Until roughly a decade ago, this land was used to grow pineapple. But when growing and exporting the delicious fruit became economically unviable, landowner Alexander & Baldwin (the agriculture/developer powerhouse that owns about 87,000 acres across the Hawaiian Islands and a third of Maui) let the land go fallow. Now A&B is looking to make a chunk of change off their idle, unused property.

Many Maui residents, however, wish to keep this land free of any development. The space hosts endangered species and serves as a cultural, recreational, and educational space for its surrounding residents. And, obvious to most of us wave-obsessed beings, it provides a beautiful backdrop to one of the best big waves on the planet.



# Building and Erosion

“Developers could potentially buy this land and build whatever they want on it,” says Torsten Durkan, Jaws local and Maui resident. “There could be more erosion and more runoff that could potentially damage the reefs around here and the ecosystem surrounding the reefs. This land is beautiful the way it is. I’d hate to see it get commercialized and turn into the North Shore, where you have the Volcom House and the Quiksilver houses but at Jaws.”



Shoreline uses, world famous surf, and cultural uses



# Peahi Fishing and Cultural Uses Today



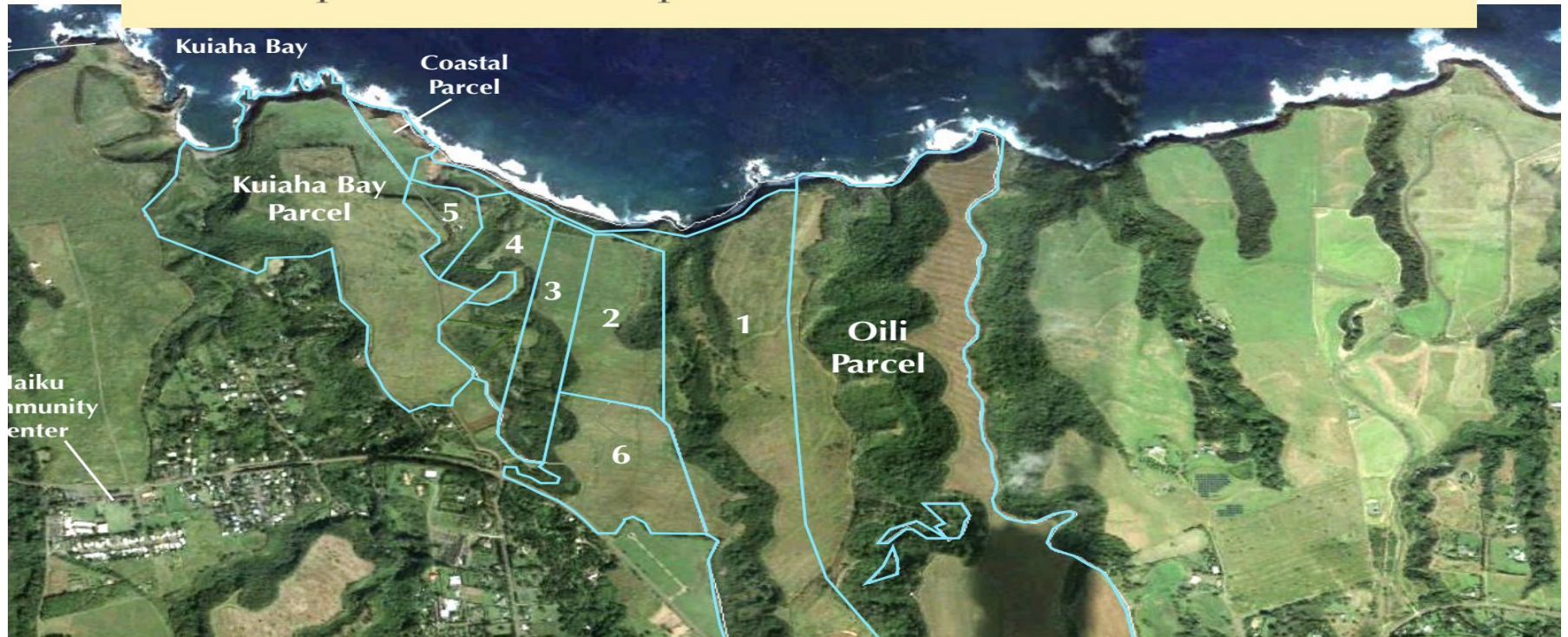


The preserve has over a mile of coastline and three traditional fishing accesses



Malama Hamakaua Maui was the creation of a group of citizens who deeply believed that this land was worth saving for the future generations.

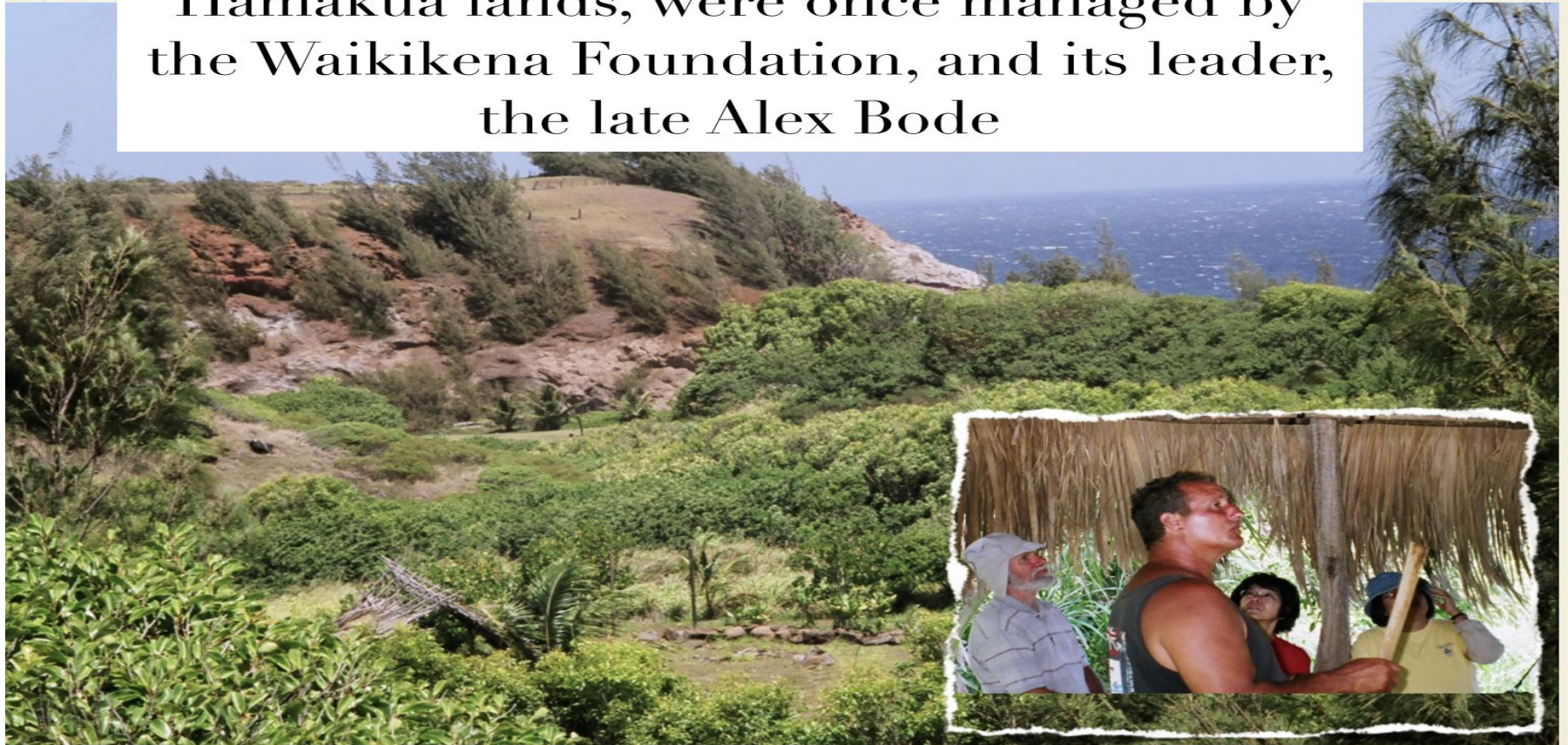
**Malama Hamakua Maui** is a non-profit tax-deductible organization committed to partnering with other groups to care for and restore 300 acres of Hamakualoa Open Space purchased with public funds from 2016- 2019



Hamakua Coastal lands, part of the 300 acre Open Space preserved forever. MHM needs your kokua to care for this land.



Hamakua lands, were once managed by  
the Waikikena Foundation, and its leader,  
the late *Alex Bode*





A Kokua Day in Action.. Press Play :)





Jan 2020 Cleanup- Kuiaha side of land-  
with Council member Mike Molina  
(below L.)



The same land- lot 1 two years later, after regular mowing and MANY clean-ups



ndav. October 3. 22

For the past 5 years, scores of Volunteers-  
of all ages- have helped MHM keep trails  
open and haul out trash



County support provides large commercial rollofts- which volunteers fill every month- cleaning new areas



Konanui Gulch runs through lots 1 and 6- unfortunately all the gulches have been used as dumps



# MHM volunteers worked even during COVID



Let's take a second to watch a clean up from the sea side..





## Feb 2020 Cleanup- Peahi side of the land





# MAHALO MĀLAMA HĀMĀKUA MAUI CLEAN UP PARTNERS

HA'IKŪ COMMUNITY ASSOCIATION  
SIERRA CLUB MAUI  
SURFRIDER FOUNDATION MAUI  
MĀLAMA MAUI NUI  
COUNTY OF MAUI  
COUNCIL MEMBER MIKE MOLINA & STAFF  
ROTARY CLUB  
WAIKIKENA FOUNDATION  
AHA MOKU O HĀMĀKUALOA  
PE'AHĪ NEIGHBORS  
AND MORE....



And MAHALO to our newest partner-

**ALL OF YOU**

**Haleakala Waldorf**

# WHAT TO EXPECT ON WEDNESDAY, NOVEMBER 9TH

Sun, rain, dirt, and a day to get your hands on the land.

We will be:

Planting, collecting trash, digging, composting, testing for ants, watering, making memories, resting in the shade, testing soil, more planting, posing for pictures, time with friends, time to soak it all in, and time to just be.....

# MAHALO

